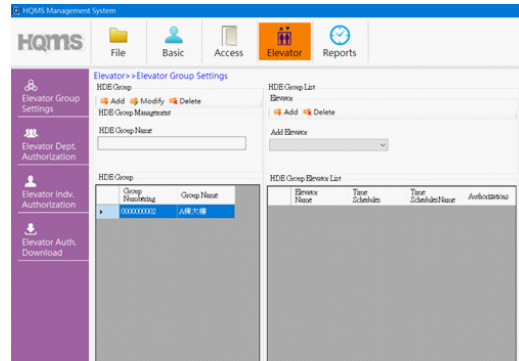


HQMS

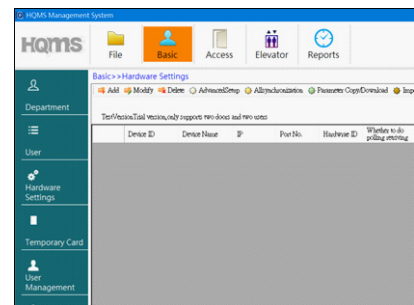
Access Control Management System (SQL Version)

- Access Control Management System (SQL version) supports access control and elevator management systems; Other applications will be included in the future.
- Modular designs software, suit for different application.
- Multi-language support; Traditional Chinese and English are available to select now, other languages can be added to the system separately.
- Client/Server Architecture
- Support multiple users to log in to the system at the same time. The data modified in client end can be promptly responded to the controller unit and the reader device.
- Supports TCP/IP devices and communicates with devices through multiple threads to have maximum efficiency and immediacy.
- Supports a variety of Hundure stand-alone access controllers time attendance recorders and can be expanded to other new models or controllers in the future.
- Provides multiple account management; Allows to set different authorizations ` access points and department staff members to different accounts . The logged-in operator can only check the data/transactions according to the authorizations of his/her account.
- Access authorizations and transactions are all automatic background processing, and flexible and open to exchange data with other systems.
- The authorizations of access control and elevator can be assigned by group or by individual to provide companies a flexible and efficient setup
- Flexible and various reports for selection; Self-definable query criteria for needed reports.
- Capable of importing various hardwares and related information to the system at a time to increase the efficiency.
- Allows to set database backup and clear historical data.
- Customize different events to automatically send emails to operator/Administrator to inform the system status in the first place.
- Customize the event names to meet different terms in different industries.
- Settable the needed event data returned from the hardware device to avoid too much extraneous data.



■ Models Supported :

Standalone Controllers	RAC-960PE/PM 、 RAC-970PE/PM
Biometric Controllers	RAC-960PEF/PMF 、 RAC-970PEF/PMF
Two Door Control Panel	RAC-2000WS/WSN
Time Attendance Recorders	HTA-860PE/PM 、 HTA-870PE/PM
Biometric Time Attendance Recorders	HTA-860PEF/PMF 、 HTA-870PEF/PMF
Elevator Control Panel	HDE-100WS



System Requirements:

A. Access Control Server (Minimum Requirements)

1. Hardware:
 - 1.1 CPU : Intel Core i5-2100 CPU (3.1GHz) or above
 - 1.2 RAM : 8GB
 - 1.3 HDD : 500G SATA or above
 - 1.4 Network Interface Card (LAN) : 100/1000M
2. Server Software :
 - 2.1 Operating System: : Windows 2008 Server / Windows 2012 Server
 - 2.2 Database : Microsoft SQL Server 2008
 - 2.3 .Net Framework 4.0
 - 2.4 HQMS Server Software

B. Client

1. Hardware:
 - 1.1 CPU : Intel Core i3-2100 CPU(3.1GHz) or above
 - 1.2 RAM : 4GB or above
 - 1.3 HDD : 500G SATA or above
 - 1.4 Network Interface Card (LAN) : 100/1000M
2. Software
 - 2.1 Operating System : Windows 10 Home Edition or above
 - 2.2 HQMS Client End Software